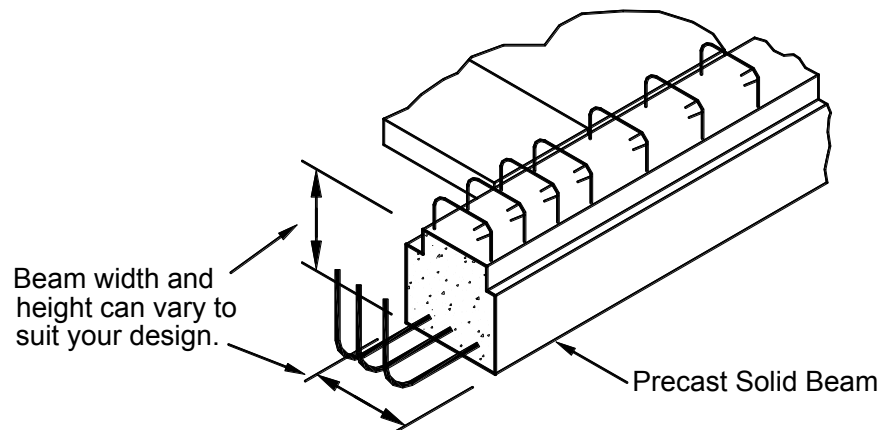


SOLID BEAMS

Precast solid beams are an efficient and cost effective solution for a fast construction process. Precast beams are available in standard widths from 190mm to 1200mm wide and specialist moulds are available on request.



SOLID BEAMS - Spec.

Product Specification:

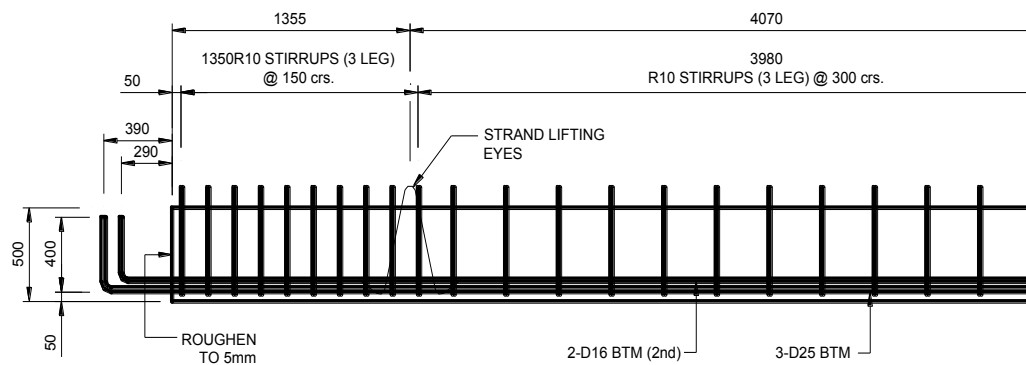
- Formstress have a range of solid beam moulds from 200 to 1200mm wide. If required, we will have 'one-off' moulds made to suit your construction requirements.
- All Formstress solid beams are cast from 45 MPa (at 28 days) concrete. If required, other concrete designs can be provided on discussion with your Formstress engineer.
- Refer to NZS 3109:1997 Table 5.1 for precast construction tolerances.

Installation/Construction:

- All precast Solid Beams need to be fully propped during the construction process. Builders should install the props to the required levels prior to placing the beams. This should be achieved to within $\pm 3\text{mm}$. The propping system (designed by others) must be adequate to carry all construction loads.
- Drilling holes through or cutting precast beams should only be undertaken with the written approval of a Formstress engineer.

General Notes:

- Contact Formstress about any specialist needs you may have with relation to your beams.
- Before manufacture can commence the contractor is required to sign off the precast shop drawings certifying that the details are dimensionally and structurally correct.
- All Formstress precast units are provided with lifting eyes. Chains and strops must be of the correct length and not more than 30 degrees of vertical when placing on site.



PRECAST BEAM PB2 (1 OFF)

