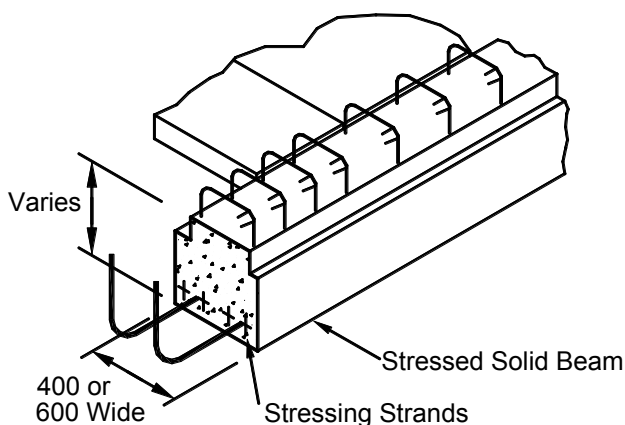


# SOLID PRESTRESSED BEAMS

Prestressed beams allow for a greater span with less overall depth and greater capacity.

Using our 400, 600 and 1200mm wide stressing beds we can produce a range of precast beams to meet most situations and offer a cost effective solution.



## Product Specification:

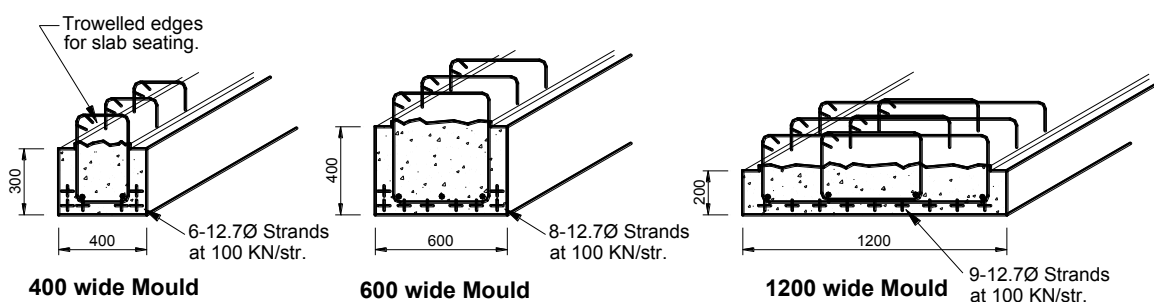
- When specifying stressed solid precast beams your structural engineer should fully detail the reinforcing as well as the number, size and stress in each strand or Formstress can help in this design.
- Refer to our standard shell beam design details for setout to prestressing strands. Between four and ten 9.5mm or 12.7mm diameter super-strands are available.
- All Formstress stressed solid beams are cast from 45 MPa (at 28 days) concrete. Other concrete designs are available on discussion with your Formstress engineer.
- Refer to NZS 3109:1997 Table 5.1 for precast construction tolerances.

## Installation/Construction:

- All precast beams need to be fully propped during the construction process. Builders should install the props to the required levels prior to placing the beams. This should be achieved to within  $\pm 3\text{mm}$ . The propping system (designed by others) must be adequate to carry all construction loads.
- Drilling holes through or cutting precast beams should only be undertaken with the written approval of a Formstress engineer.

## General Notes:

- Contact Formstress about any specialist needs you may have with relation to your beams.
- Before manufacture can commence the contractor shall sign off the Formstress shop drawings certifying that the shop drawings are dimensionally and structurally correct.
- All Formstress precast units are provided with lifting eyes. Chains and strops must be of the correct length and not more than 30 degrees of vertical.



## Examples of Solid Stressed Precast Beams